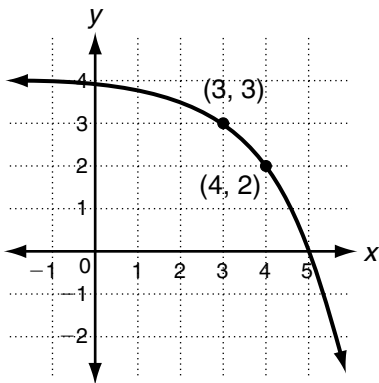


CHAPTER 7 **Quiz**
Section B

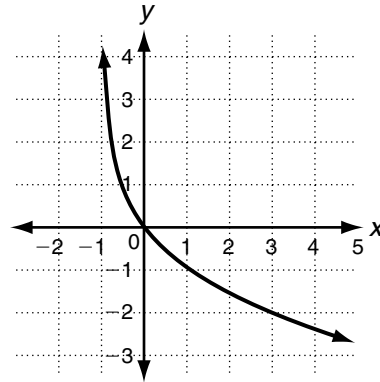
Select the best answer.

- Solve $4^{x-4} = 0.5^{5-2x}$.
A $x = 1$
B $x = 2$
C $x = 3$
D There is no solution.
- Solve $5^{2x} = 20$.
F $\frac{\log 10}{\log 25}$ **H** $\frac{\log 20}{\log 10}$
G $\frac{\log 20}{\log 25}$ **J** $\frac{2\log 20}{\log 5}$
- What is the sum of the solutions of the equation $\log_2(x + 2) + \log_2(3 - x) = 2$?
A -1 **C** 1
B 0 **D** 2
- Which of the following is equal to $2e^{2\ln 4} - \ln e^8$?
F 8 **H** 24
G 16 **J** 32
- What could be the function shown in the graph?



- A** $a(x) = \log_2(x - 5) + 2$
B $b(x) = -2^{x-3} + 4$
C $c(x) = \log_2(5 - x) + 2$
D $d(x) = 2^{3-x} + 4$

- What could be the function shown in the graph?



- F** $f(x) = -\log_2(x + 1)$
G $g(x) = 2^{1-x} - 2$
H $h(x) = -\log_2(x) - 1$
J $j(x) = 2^{2-x} - 1$

- If the data below is from an exponential function, what is the value of a ?

x	2	3	a
y	4	6	13.5

- A** 4 **C** 6
B 5 **D** 7
- What is the y -intercept of the function $f(x) = e^x + 7$?
F $\ln(-7)$
G 7
H 8
J $e + 7$

- The data below is from an exponential function. What is the value of the constant ratio?

x	-2	0	2	4	6
y	$\frac{1}{3}$	1	3	9	27

- A** -3
B -2
C 2
D 3

- 22. F
- 23. D
- 24. H
- 25. A
- 26. J
- 27. D
- 28. F
- 29. C
- 30. G
- 31. C
- 32. G
- 33. B
- 34. F
- 35. D
- 36. J
- 37. B
- 38. H
- 39. A
- 40. J
- 41. A
- 42. G
- 43. C
- 44. F

CHAPTER 7

Section Quiz: Section A

- 1. C
- 2. F
- 3. D
- 4. J
- 5. D
- 6. H
- 7. C

- 8. J
- 9. C
- 10. J
- 11. B
- 12. F
- 13. A
- 14. G

Section Quiz: Section B

- 1. D
- 2. G
- 3. C
- 4. H
- 5. B
- 6. F
- 7. B
- 8. H
- 9. D

Chapter Test Form A

- 1. A
- 2. A
- 3. B
- 4. B
- 5. A
- 6. D
- 7. B
- 8. B
- 9. B
- 10. D
- 11. A
- 12. A
- 13. A
- 14. B