

Algebraic Reasoning

Name: _____

Per: _____

POINTS: _____

Classwork #24 Quiz

Be sure to include your work when appropriate.

Indicate if the data in each pair of tables represent inverse functions or not.

1.

x	$f(x)$
-3	5
-1	3
2	-2
-2	-6

x	$f(x)$
5	-3
3	-1
-2	2
-6	-2

2.

x	$f(x)$
-7	-1
0	0
2	1
4	2

x	$f(x)$
-1	-7
0	0
1	2
2	4

Algebraic Reasoning

Name: _____

Per: _____

POINTS: _____

Classwork #24 Quiz

Be sure to include your work when appropriate.

Indicate if the data in each pair of tables represent inverse functions or not.

1.

x	$f(x)$
-3	5
-1	3
2	-2
-2	-6

x	$f(x)$
5	-3
3	-1
-2	2
-6	-2

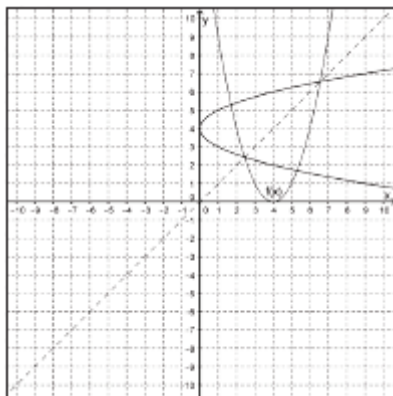
2.

x	$f(x)$
-7	-1
0	0
2	1
4	2

x	$f(x)$
-1	-7
0	0
1	2
2	4

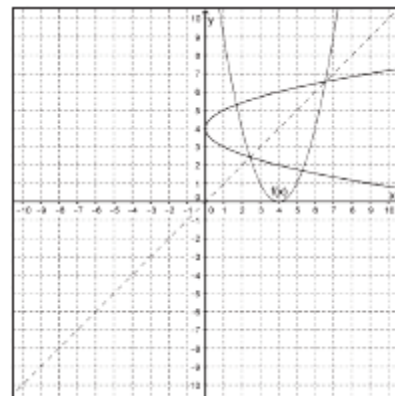
Each graph shows a function and its inverse. Determine how the domain of $f(x)$ should be restricted so the inverse is also a function.

3.



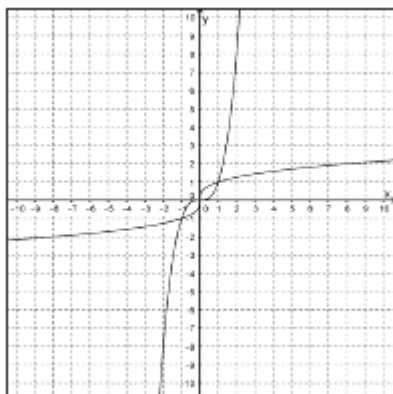
Each graph shows a function and its inverse. Determine how the domain of $f(x)$ should be restricted so the inverse is also a function.

3.



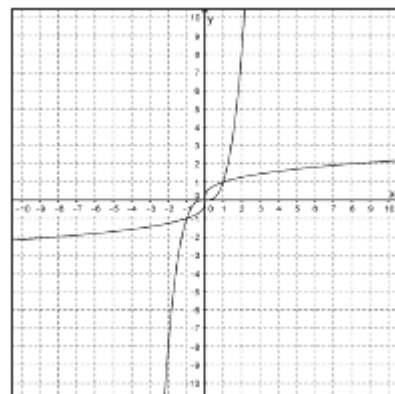
Indicate if each graph represents an inverse relationship or not.

4.

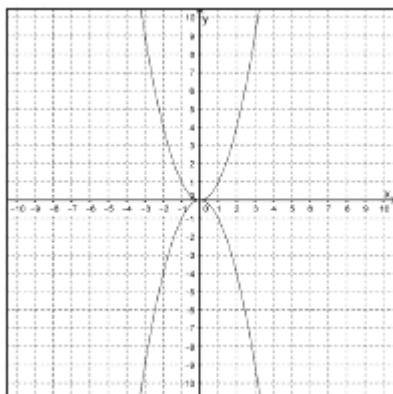


Indicate if each graph represents an inverse relationship or not.

4.



5.



5.

